

NANCY TOOMEY *Fine Art*

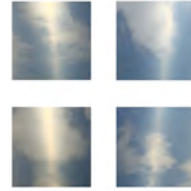
ART MARKET SAN FRANCISCO BOOTH 303



CASPER BRINDLE
Deep Pacific Reversed, 2016
Acrylic, Automotive Paint,
Resin on Panel
38 x 58 inches
\$14,500



CAROLE SILVERSTEIN
a reservoir of moonstone, 2015
Acrylic Ink and Illuminated
Paint on Mylar
36 x 40 Inches
\$10,000



MIYA ANDO
Blue Cloud Grid, 2017
Ink on Stainless Steel
12 x 12 Inches Each
\$3,000 \$9,500



LISA BARTLESON
Sphere 0417.42., 2017
Mixed Media, Resin on Panel
42 x 42 x 2 Inches
\$9,200



GREGG RENFROW
Consider One, 2017
Polymer, Pigment on Cast
Acrylic, Double Panels
24 x 24 Inches
\$4,750



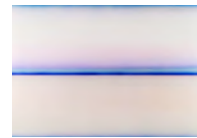
LISA BARTLESON
Untitled No 2 see thru, 2016
Bio Resin and Pigment on Scrim
30 x 27 x 2 Inches
\$7,750



CAROLE SILVERSTEIN
the clairvoyance of aquamarine,
2016, Acrylic Ink and
Illuminated Paint on Mylar
36 x 40 Inches
\$10,000



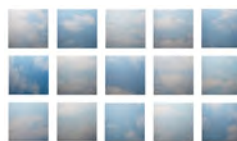
REGG RENFROW
Falling Up, 2017
Polymer, Pigment on Cast
Acrylic, Double Panels
24 x 24 Inches
\$4,750



CASPER BRINDLE
Lightness, 2016
Acrylic, Automotive Paint,
Resin on Panel
48 x 72 inches
\$18,500



ANDREW FISHER
Rain 2, 2015
24k Gold Leaf, Canvas, Steel
Bars, Thread
52 x 39.5 Inches
\$14,000



MIYA ANDO
Blue Cloud Grid, 2017
Ink on Stainless Steel
18 x 18 Inches Each
\$3,800 Each \$48,000 All



SUZAN WOODRUFF
Glazier, 2016
Acrylic on Acrylic Panel
48 Inches
\$10,000