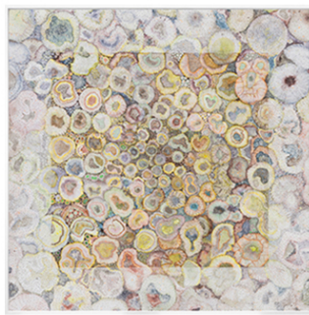


NANCY TOOMEY *Fine Art*

Art Market San Francisco - Booth D05 - April 20 to 23, 2023



NANCY TOOMEY *Fine Art*



MIYA ANDO

Unkai (A Sea of Clouds) Bolinas, California 12/30/2021 7:20pm, 2022

Ink on aluminum composite

45.75 inches diameter

\$40,000

NANCY TOOMEY *Fine Art*



MIYA ANDO

Muzuki (No Moon) December 18 2020, 2020

Natural indigo, micronized pure silver, Kozo paper

42 x 42 inches (framed in Optium)

\$18,000



JUD BERGERON

My Dream Making Machine, 2022

Cast bronze and travertine marble

79 x 12 x 12 inches

Unique

\$45,000



JUD BERGERON

Untitled, 2019

Bronze and stainless steel

7.5 x 3.5 x 3.5 inches

Unique

\$3,000

NANCY TOOMEY *Fine Art*



CASPER BRINDLE

Light Glyph 4, 2023

Pigmented acrylic

23 x 10 inches

\$4,500

NANCY TOOMEY *Fine Art*



CASPER BRINDLE

Light Glyph 5, 2023

Pigmented acrylic

23 x 10 inches

\$4,500

NANCY TOOMEY *Fine Art*



CASPER BRINDLE

Light Glyph 6, 2023

Pigmented acrylic

23 x 10 inches

\$4,500

NANCY TOOMEY *Fine Art*



CASPER BRINDLE

Light Glyph 7, 2023

Pigmented acrylic

23 x 10 inches

\$4,500



CLAIRE BURBRIDGE

Morphic Resonance, 2022

Mineral and semi precious stone pigment watercolors, pen and ink

56 x 56 inches (framed)

\$29,500

NANCY TOOMEY *Fine Art*



CLAIRE BURBRIDGE

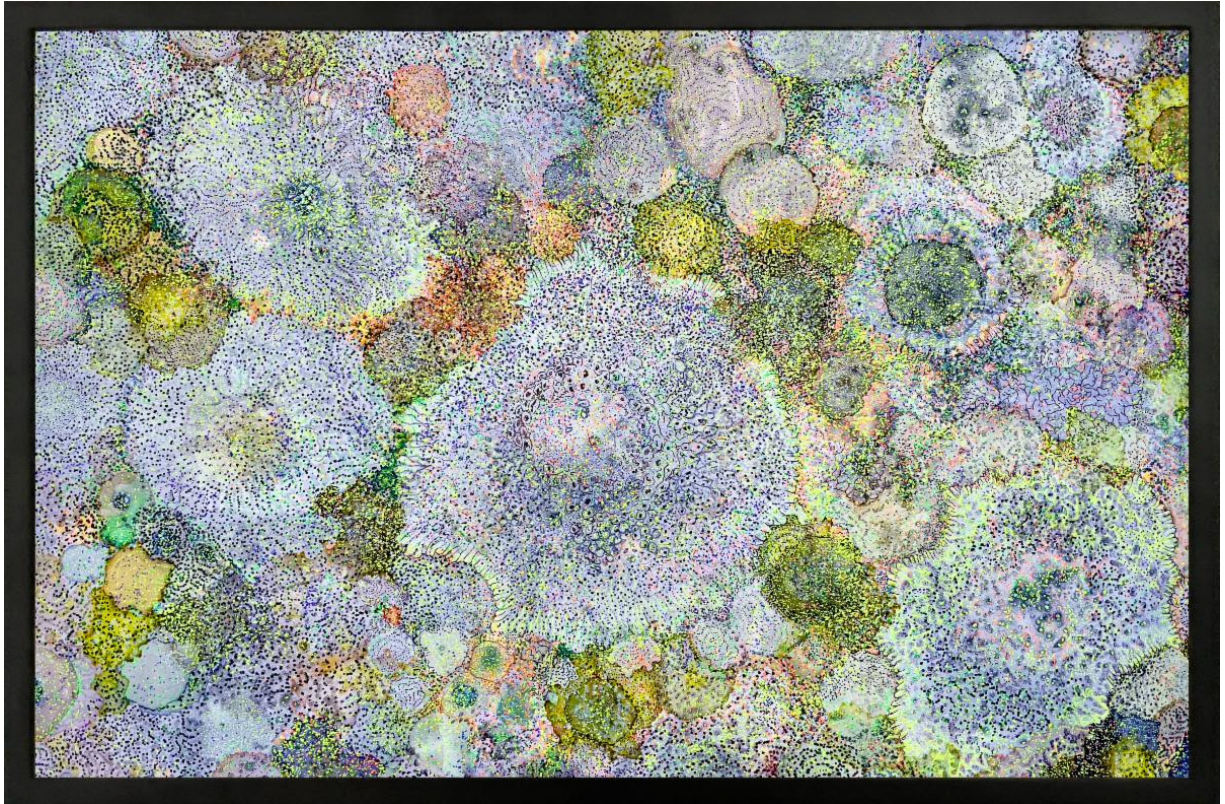
Abstract in Nature 2, 2022

Pen and ink on Arches paper

22 x 16 inches

\$6,250

Nancy Toomey Fine Art 1275 Minnesota Street, San Francisco, CA
415.307.9038 nancy@nancytoomeyfineart.com



CLAIRE BURBRIDGE

Abstract in Nature, 2022

Watercolor, pen and ink, salt crystals, on Yupo paper

12.5 x 19.5 inches

\$5,250

NANCY TOOMEY *Fine Art*



MONICA LUNDY

023, 2012

Charcoal on Fabriano paper

34.25 x 26 inches

\$6,000

NANCY TOOMEY *Fine Art*



MONICA LUNDY

043, 2012

Charcoal on Fabriano paper

34.25 x 26 inches

\$6,000



MONICA LUNDY

Alcool (Alcohol) from the Hospital Pharmacy of Santa Maria della Pietà, 2019

Burned drawing on Fabiano paper

12 x 10 inches (framed)

\$1,500



MONICA LUNDY

*Mercurio Cianuro (Mercury Cyanide) from the Hospital Pharmacy of
Santa Maria della Pietà, 2020*

Burned drawing on Fabriano paper

12 x 10 inches (framed)

\$1,500

NANCY TOOMEY *Fine Art*



CHRIS NATROP

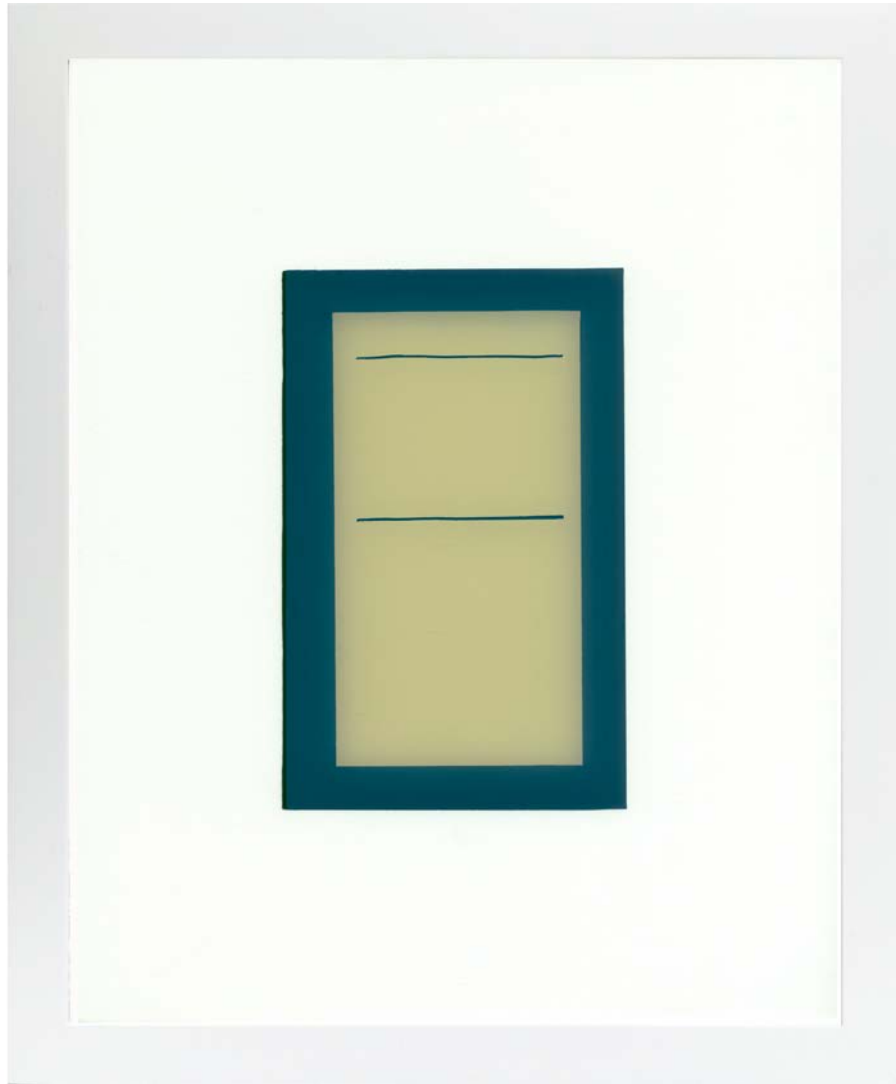
Strong Emergence 1, 2022

Acrylic on paper

30.75 x 27.75 inches

\$5,000

NANCY TOOMEY *Fine Art*



MARIA PARK

Cover 5, 2013

Acrylic reverse painted on glass

9 x 11 inches (framed)

\$2,200

NANCY TOOMEY *Fine Art*



MARIA PARK

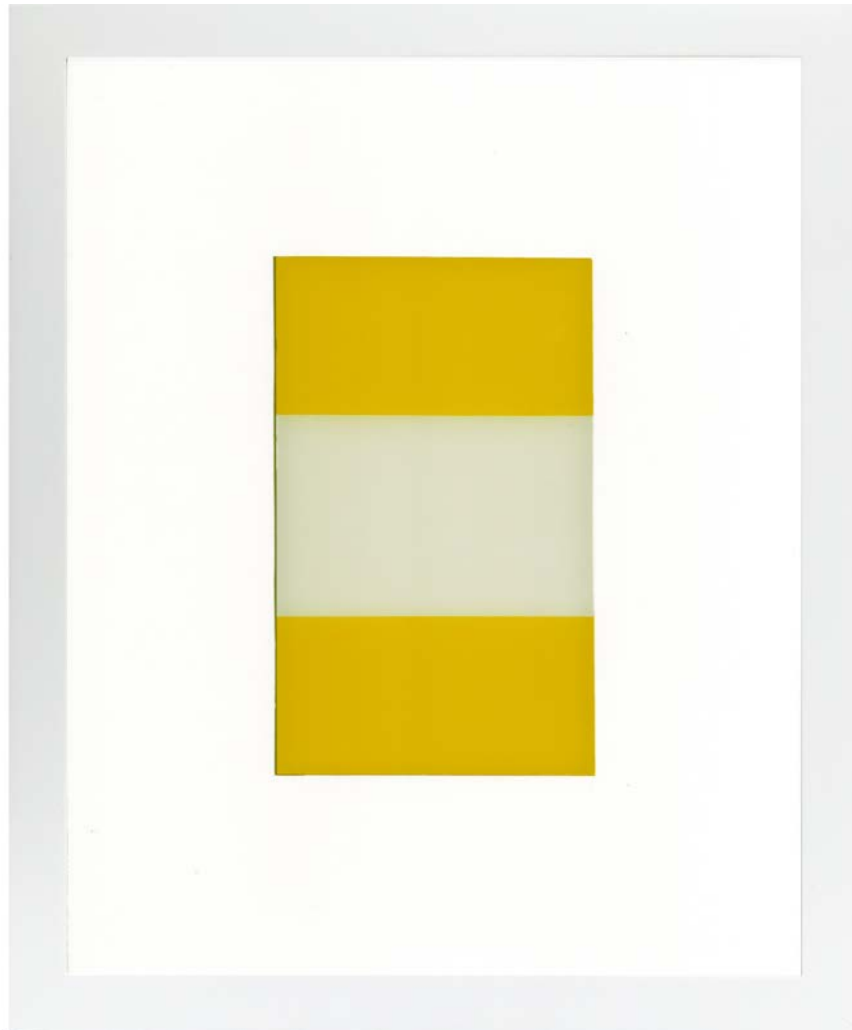
Cover 8, 2013

Acrylic reverse painted on glass

9 x 11 inches (framed)

\$2,200

NANCY TOOMEY *Fine Art*



MARIA PARK

Cover 6, 2013

Acrylic reverse painted on glass

9 x 11 inches (framed)

\$2,200

NANCY TOOMEY *Fine Art*



RUTH PASTINE

Blue 3, Depths Series, 2020

Oil on paper

30 x 22 inches

\$13,200

NANCY TOOMEY *Fine Art*



GREGG RENFROW

Land of the Living, 2023

Pigment on cast acrylic

48 x 48 inches

\$12,000



ROBERT SAGERMAN

3,221, 2022

Silicone and pigment on paper

28 x 16 inches (framed)

\$3,000



ROBERT SAGERMAN

2,446, 2022

Silicone and pigment on paper

28 x 16 inches (framed)

\$3,000

NANCY TOOMEY *Fine Art*



AUDREY TULIMIERO WELCH

Tree Body Map 3, 2023

Mixed media on canvas

48 x 40 inches

\$8,800

NANCY TOOMEY *Fine Art*



AUDREY TULIMIERO WELCH

Tree Body Map 1, 2023

Mixed media on canvas

28 x 24 inches

\$4,500

NANCY TOOMEY *Fine Art*



AUDREY TULIMIERO WELCH

Tree Body Map 2, 2023

Mixed media on canvas

28 x 24 inches

\$4,500